

SCHOOL OF ROCK™

We proceed from the belief that the best way to learn to do almost anything is by doing it. And, we feel that this is particularly true about learning to play music.

Our goals at the School of Rock Music are: to help our students realize their potential as artists, to put them on stage in front of as many people as possible and to help foster a new generation of incredible musicians.

From the moment a student joins one of our schools they are PLAYING music; loud, on professional equipment with other musicians. Before long, our students are playing live rock concerts. These are not your old fashioned wait-through-fifty-other-students-mangling-their-songs-until-your-child's-turn-arrives recitals, but real rock concerts at real rock venues in front of real rock audiences.

Shows are picked for their educational merit and content (for example: Queen teaches harmony, punk develops performance and stage presence and Zappa offers a crash course in musicianship). Thus, if they fail, they fail at aiming at the best. And, when they succeed, which is more often than not, they have accomplished something extraordinary.

Each year our students play over 500 concerts to more than 200,000 people, at such legendary venues as CBGBs, The Trocadero, Cafe DuNord, The Knitting Factory, Cervantes Ballroom and BB Kings in Times Square. We are always looking for grander stages to put our students on, and to date our students have played Lollapalooza and other festivals from California to Germany, opened for national acts coast to coast and performed live on television and radio countless times.

What results from all of this is the best education of the execution and performance of rock music that I could imagine. Our goals are being met, as I am personally astonished by how good our kids have become.

Paul Green,
Founder and President

SPRING 2011

SHOWS

Pink Floyd's The Wall

The first show that every School of Rock does is The Wall. We did it in 06 and I miss it. Roger Waters' and David Gilmore's masterpiece of a rock opera.

"Isn't this where we came in?"

**SHOWS: April 30 &
May 1st**

Contemporary ROCK

Nero's pick of the Best Music from the last decade.

Everything from Radiohead to Beyonce to Outkast to the White Stripes.

SHOWS: May 6 & 7

HAIR METAL

Celebrate the 80's and all the decadence that came with it including the Hair, the Spandex, the Lip gloss, the Eyeliner, and of the Metal!

Come witness the music that sprang from Hollywood's Sunset Strip and became a global phenomenon!

Revisit an era that brought us such bands as Motley Crue, Poison, Whitesnake, Lizzy Borden, White Lion, E'nuff Z'nuff, Guns and Roses, and Mr. Big just to name a few!

SHOWS: May 13 & 14

CLASSIC ROCK

All greatest hits from the Classic Rock catalog. Led Zep, Aerosmith, The Who, the Rolling Stones, The Beatles, Pink Floyd, Santana, Janis, Jefferson Airplane, CSNY, Bob Dylan and more.

SHOWS: May 20 & 21



SOR-Wilmington

Is located in the
Boxwood Commerce Center
484 Century Blvd.
Wilmington, DE 19808
(Off Centerville Rd. next to Wal-mart)

To schedule your
Free trial lesson
or to reserve tickets
for Season Shows
call

(302) 656-ROCK (7625)

**www.schoolofrockde.com
svalgard@schoolofrock.com**

HOURS of OPERATION

Monday-Thursday

3:30-8:00

Saturday

11-5

What's this Rock School thing all about?



Eric Svalgård
DIRECTOR



TUITION FEES

The School of Rock – Wilmington
Operates with an open, rolling admissions
process for all 3 seasons
(Spring, Summer, Fall) throughout the year.

One Student, One Instrument- \$225.00
Includes one 45 min. private lesson per week
and one 3 hour rehearsal each week.

One Student, Two Instrument- \$345.00
Includes one 45 min. private lesson per week,
per instrument and one 3 hour rehearsal each
week.

Two Students, One Instrument each- \$420.00
Includes one 45 min. private lesson per week,
per student, and one 3 hour rehearsal each
week.

The School of Rock

accepts students from ages 10-18 and
turns them into genuine rock stars.

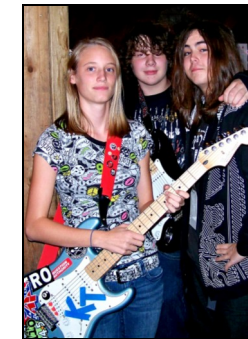
Each week, each
student will
receive a
45 minute
private
lesson
and will also
participate in a
weekly 3 hour
rehearsal to prepare
them for the main



Shows performed:

- Pink Floyd's The Wall**
- Van Halen**
- Rolling Stones**
- Southern Rock**
- Black Sabbath**
- Hendrix**
- Megadeth**
- Frank Zappa**
- Guitar Gods**
- Corporate Rock**
- Woodstock**
- David Bowie**
- The Hippie Show**
- Tommy by the Who**
- Classic Metal**
- The Worst Show Ever**
- Women Who Rock**
- Iron Maiden vs. Judas Priest**
- Allman Brothers vs. Lynyrd Skynyrd**

- AC/DC**
- Beatles**
- The 80s**
- The 90s**
- Funk**
- The Who**
- Metallica**
- Beach Party**
- Pink Floyd**
- The Doors**
- Glam Rock**
- Led Zeppelin**
- King Diamond**
- Roots of Rock**
- Queen**
- Cowbell**
- Prince**
- Prog Rock**
- Punk**
- &**
- KISS**



REQUIRED CONCERT TICKET SALES

The School of Rock believes that
students should learn what it means to
become a performing musician.
Besides the bright lights, smoke
machines, practices, and rehearsals,
they will also experience promoting
their shows to their friends and relatives.

8 Tickets per concert season.
\$8.00 each= \$64.00 Total

School of Rock is **STILL** the only national
performance-based music school
with branches in over
60 locations.

